



WE CONNECT SPORT WITH ENGINEERING

3D Scanning tutorial

Content

0. Foreword.....	2
1. How to create a 3D model of your face using photogrammetry.....	2
2. Data Protection Notice	8

0. Foreword

This facial scan is required either to assess the fit of a standard-size mask or to create a fully customized, made-to-measure mask. The data collected is used solely for product design and fitting purposes. All scans are conducted in compliance with applicable data protection regulations, including GDPR, and are handled with strict confidentiality. Only authorized personnel will access the information, and it will not be shared with third parties. By following these procedures, we ensure both safety and precision in delivering well-fitting, high-quality masks.

1. How to create a 3D model of your face using photogrammetry

To assess the correct size of a standard mask or to produce a custom-made mask, we will need a 3D model of your face. You can easily create this at home without a professional scanner – all you need is a smartphone and the **free Polycam app** for iOS/Android!

[Download the app for iOS](#)

[Download the app for Android](#)

GDPR and Data Protection

Your data is processed in accordance with GDPR and will be used exclusively to assess the correct mask size or to manufacture a custom-made mask.

Tips for the most accurate 3D model:

1. We recommend the assistance of another person, as the app uses the smartphone's rear camera and requires internet connection.
2. Stand close to a wall (preferably white) so that the 3D model is not disturbed by other objects. Natural daylight from the front of the face is ideal to avoid shadows.
 - If daylight is not available, use a well-lit place with minimal shadows.
3. Keep your head and face still and look at one point.
4. Do not wear glasses, hats, or any other objects.
5. If you have a thick or long beard, we recommend trimming it so the 3D model captures the face itself rather than the beard's surface.
6. With long hair or bangs, tie or pull the hair back so the face is fully visible from chin to forehead.

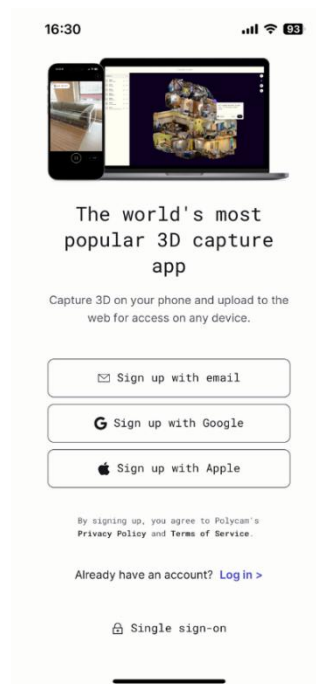
7. The app will take photos while your assistant slowly moves around your head with the smartphone, capturing all angles and distances.
 - We recommend taking close-up shots as well, provided the camera can capture them sharply.
8. For best accuracy, we recommend at least 100 shots (the maximum is 150).
9. Additionally, we will need at least 4 manual measurements from you to validate the 3D model.



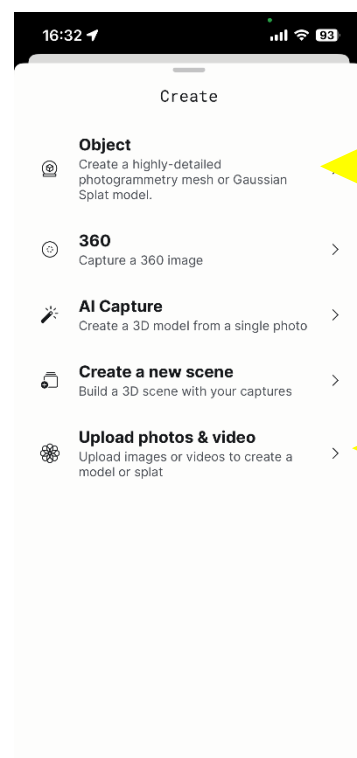
Inspection measurements of 3D scan done by COMPOACC

Step-by-step scanning guide:

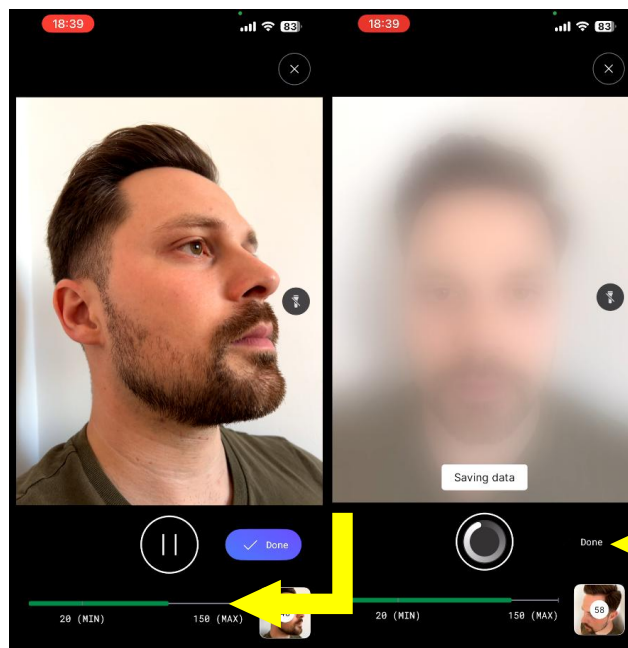
1. Download and install the app from the App Store / Google Play.
2. Open the app on your smartphone and create an account (for example, via Google).



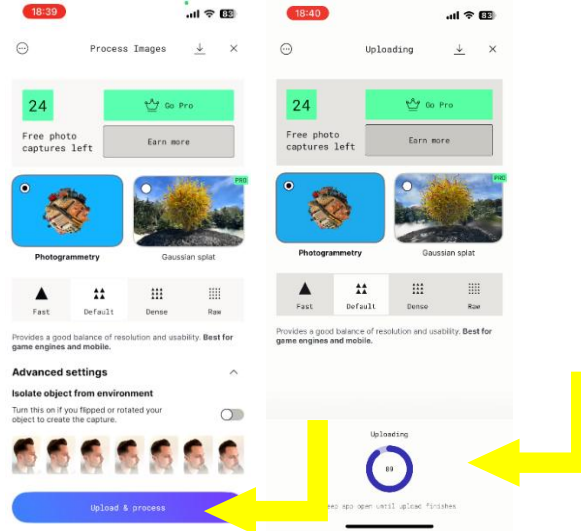
3. In the bottom section of the app, tap the "+" button and select the "Object" scan type.



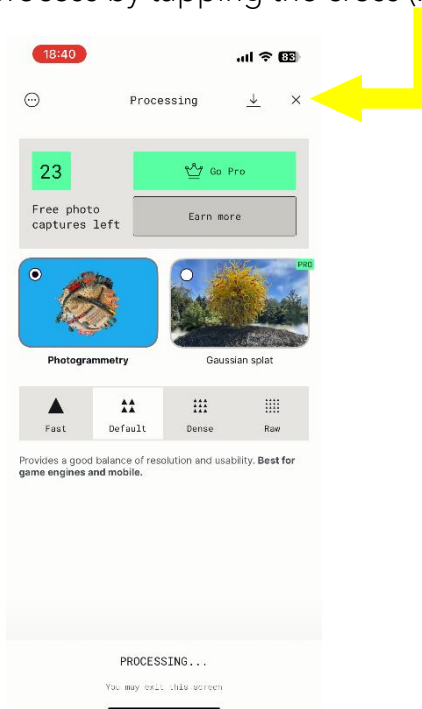
4. The app will probably request for subscription with 1 week free trial. Do not forget to cancel the subscription once the scanning is completed.
5. If you would like to avoid this step, choose the option „Upload photos & video“ as seen in the picture above and select the photos captured manually before from your library. It is mandatory to import at least 100 detailed photos.
6. The app will take photos while your assistant slowly moves around your head with the smartphone, capturing all angles and distances.
 - a. We recommend taking detailed close-ups if your camera can capture them sharply.
 - b. Capture at least 100 shots.
 - c. Tap DONE to finish.



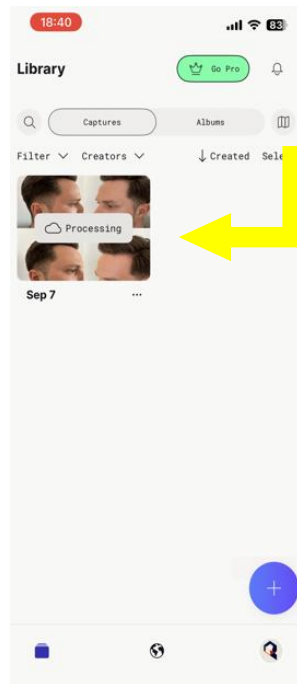
7. The scanning process will end and the photos will be uploaded. Upload time depends on your internet speed. You will see the upload status and completion.



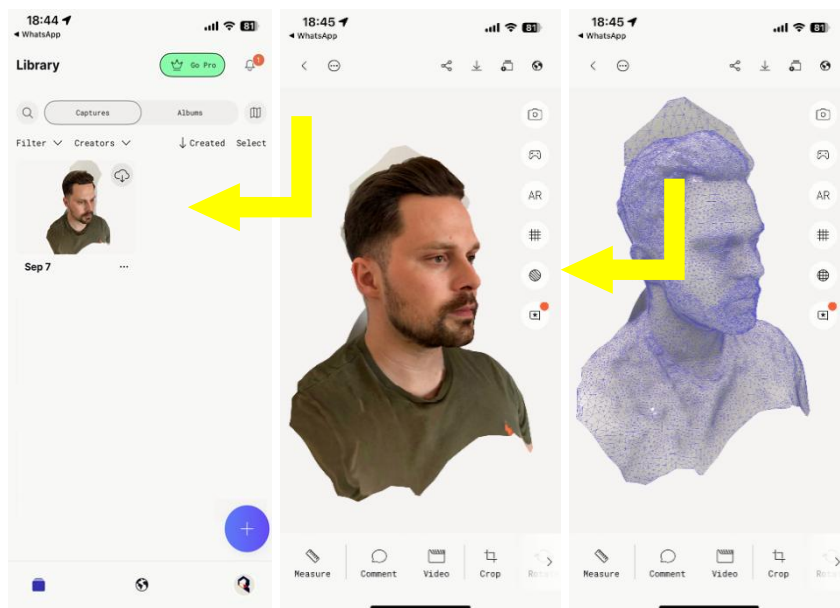
- a. You can exit the process by tapping the cross (X).



8. The 3D model will be generated in the app and you will be notified once it is ready.



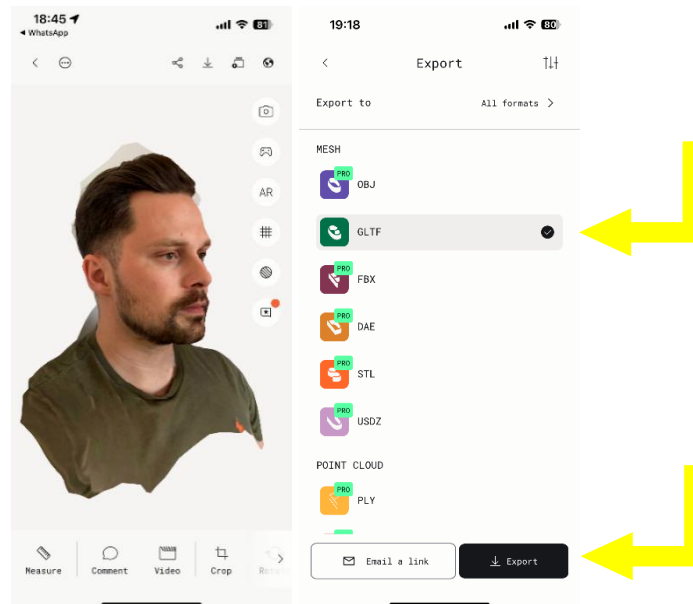
9. Viewing the model:
- In the right-hand menu, you can change the mesh display style and other options.
 - Use zoom and gestures to move and rotate the model.



10. Export the model with texture and send it to info@compoacc.com

11. Capture such measurements and send it to info@compoacc.com

a. These captures are mandatory to validate the scan precision. You can use the ruler or any other measuring device.



2. Data Protection Notice

Your 3D facial model and captures of manual measurements will be used exclusively to determine the correct standard mask size or to produce a custom-made protective mask. Data will not be shared with third parties and will be processed in accordance with GDPR. You have the right to request deletion of your data at any time.

In Bratislava, 01.09.2025

Adrian VOROS, MSc
CEO & Chief Engineer